



QUANTASEP® 1000 SU

Sanitary 1 LPM Single Use Flowpath System

QuantaSep® is a fully integrated system designed to truly automate your purification process. This sanitary bench top system enables you to automatically equilibrate, load, wash, elute and regenerate your chromatography columns. You can also control each step of the purification process based on UV, pH, conductivity, time, column volume, volume, air or % peak max. As the sensors monitor column outflow, the computer reads the information to automatically change buffers and collect fractions, stepping through the method as you programmed it. The computer logs all data such as events, alarms and chromatograms for analysis.

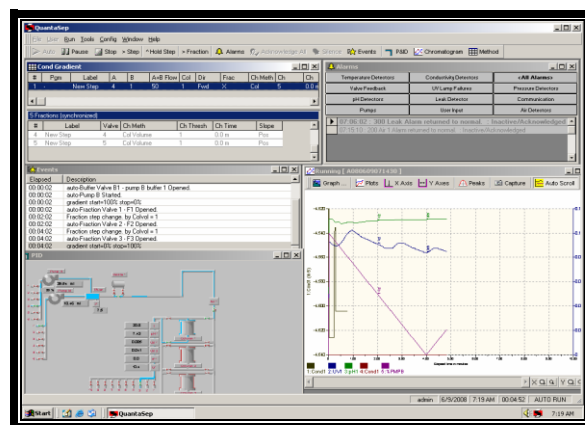


QuantaSep® 1000 SU Highlights

- Removeable sanitary braided silicon/polypropylene flow-path
- Removable pH, conductivity, and UV flow cell
- Removeable pressure sensor
- Column bypass, forward and reverse flow
- Automates buffer delivery, column switching, fraction collection, based on time, volume, UV, pH, and conductivity
- Small footprint can fit on bench-top, laminar flow hood or cold room.
- Large dynamic flow range – up to 1000 ml/min.
- Small hold-up volume
- Graphical, intuitive, 21CFR-compliant software, “dashboard” style for easy operation and training
- Automated cGMP reports
 - Complete batch reports
 - Event and logs
 - Chromatograms and calibration history
- Safety Features
 - Removable active air sensor automatically ejects air

QuantaSep® Software: Simple and Powerful

The simplicity of QuantaSep®’s interactive graphical user interface gives the system its efficiency and power by making it easy to learn and use. You don’t need to refer to printed flow diagrams and manuals. Because, even if you have little or no computer experience, QuantaSep®’s intuitive on-screen operations make the system easy to use – from the moment you plug it in.



Removable Flowpath

The flowpath of this system is designed so that you can change it easily. This eliminates the need for cleaning validation. Any issues related to cross-contamination in switching columns or products are substantially minimized by simply replacing the flow-path. Pinch valves and peristaltic pumps enable easy removal of the pre-fabricated tubing assembly along with the integrated sensor block, which can be easily removed and replaced as well.



QuantaSep® Has What It Takes

The QuantaSep® System can automate many routine manual tasks related to process development and free up key scientists' time to handle additional mission-critical projects. It allows process development departments to manage deadlines to produce clinical/pre-clinical material, scale-up processes and troubleshoot or downscale production problems all within existing headcount and budgetary constraints. CGMP batch reports are automatically generated by the system. Call today!



1205 SAN LUIS OBISPO ST, HAYWARD, CA
94544 PHONE: 510-475-0650 FAX: 510-475-0625
[HTTP://WWW.SEPRAGEN.COM](http://www.sepragen.com)

QuantaSep® 1000 SU Specifications

- Removable tubing
- Removable sensors
- 6 user selectable buffers
- Forward/reverse/bypass mode
- 6 user selectable fractions with fraction collect capability
- Sanitary design
- Range: 100-1000 ml/min, $\pm 5\%$
- Hold up volume: 120 ml
- Small component footprint: 21" X 26" X 15"
- Pressure rating: 50 psi
- Tubing: 3/8" I.D.

Wetted Materials of Construction

Silicone, polyethylene and polypropylene tubing; PTFE diaphragms; glass/quartz/316L stainless steel sensor components.

Components Specifications

- 280 nm UV 0-2 Au
- Conductivity Sensor 0-200 ms, $\pm 5\%$
- pH Sensor 1-14 pH, ± 0.2
- Air Bubble > 0.2"
- Pressure Sensor 0-100 psi ± 1 psi

Computer & Software

Includes PC, monitor, keyboard, software, and communications board and cable.

Warranty, Installation & Support

All QuantaSep®'s are backed by Sepragen's one year limited warranty. Installation and training, along with IQ/OQ are performed by Sepragen Service Group. Preventative Maintenance service is available. Validation support packages are also available.

Call (510) 475-0650 to schedule a free confidential consultation about automating your purification process.